

## Model 60 Leverlock Actuator

6,000 pound capacity, Max. G.V.W.R., 600 pound tongue load  
G.V.W.R. limited to ball rating.



Part No. Primed Non-Standard	Part No. Plated	Brake Type	Standard or Non-Standard	Weight	Pallet Qty.	Master Cyl.	Master Cyl. Assy. Kits	CPLR Repair Kit	Description
4338600	4332900	Drum	STD	20	36	23361	43951	43584	3" Tongue
	4715400	Disc	STD	20	36	47142	15026	43584	3" Tongue

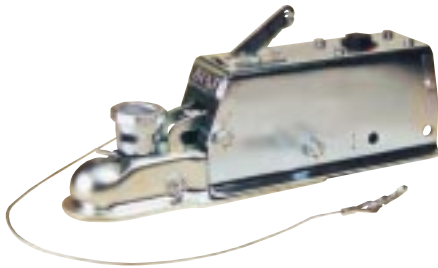
NOTE: For 3" wide trailer tongue.

NOTE: Fits 1 7/8", 50mm and 2" Ball.

NOTE: PRIMED PARTS ARE NON-STANDARD

## Model 60 Multi-fit Actuator

6,000 pound capacity, Max. G.V.W.R., 600 pound tongue load  
G.V.W.R. limited to ball rating.



Part No. Primed Non-Standard	Part No. Plated	Brake Type	Standard or Non-Standard	Weight	Pallet Qty.	Master Cyl.	Master Cyl. Assy. Kits	CPLR Repair Kit	Description
4339900	4339700	Drum	STD	20	36	23361	43951	40454	3" Tongue
	4745700	Disc	STD	20	36	47142	15026	40454	3" Tongue

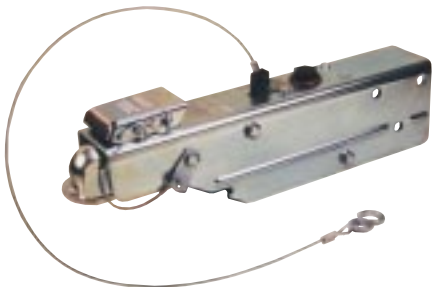
NOTE: For 3" wide trailer tongue.

NOTE: Fits 1 7/8", 50mm and 2" Ball.

NOTE: PRIMED PARTS ARE NON-STANDARD

## Aero 6000 Actuator

6,000 pound capacity, Max. G.V.W.R., 600 pound tongue load.

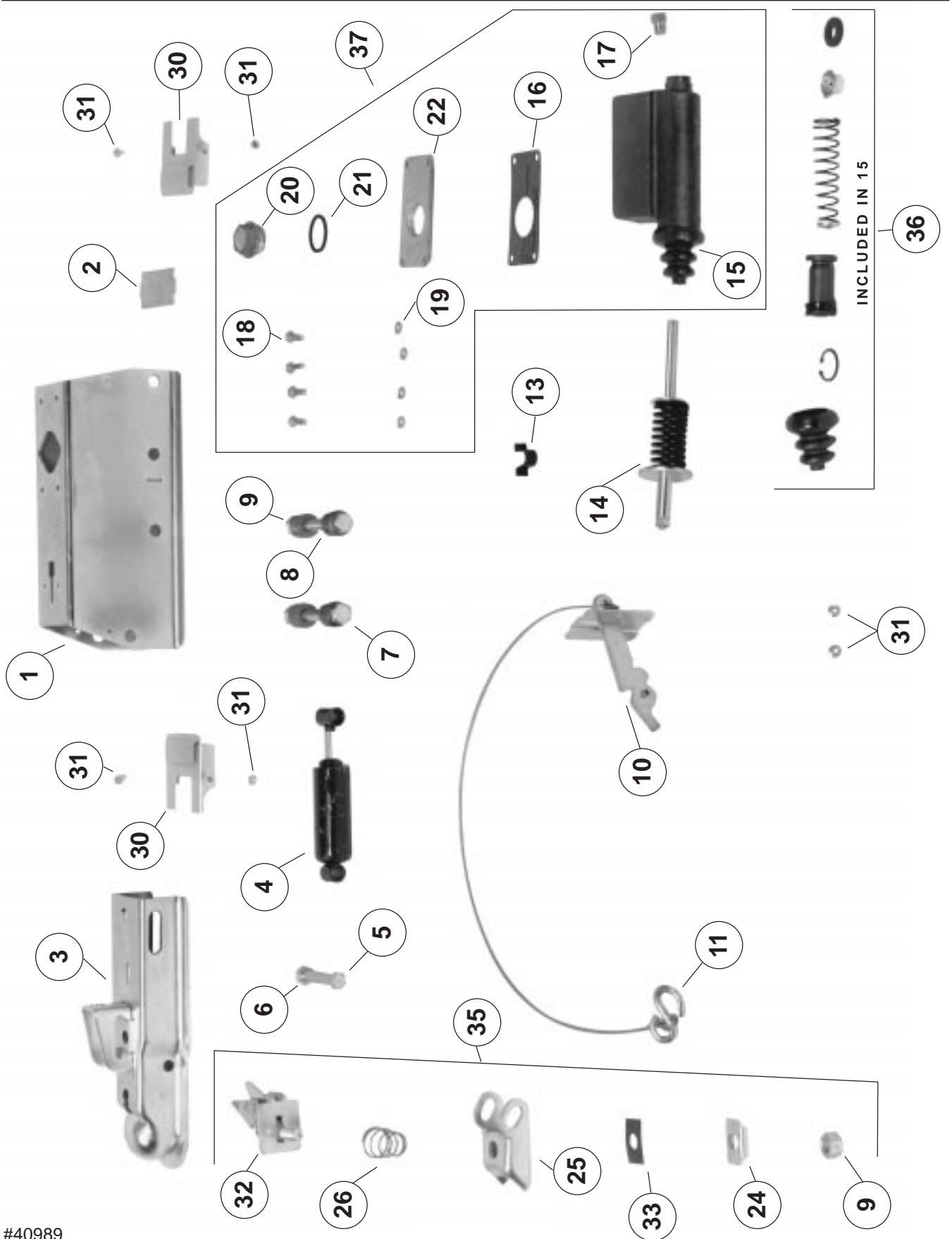


Part No. Primed	Part No. Plated	Brake Type	Standard or Non-Standard	Weight	Pallet Qty.	Master Cyl.	Master Cyl. Assy. Kits	CPLR Repair Kit	Description
	4500600	Drum	STD	24	36	23361	43951		3" Tongue
	4606500	Disc	STD	24	36	47142	15026		3" Tongue

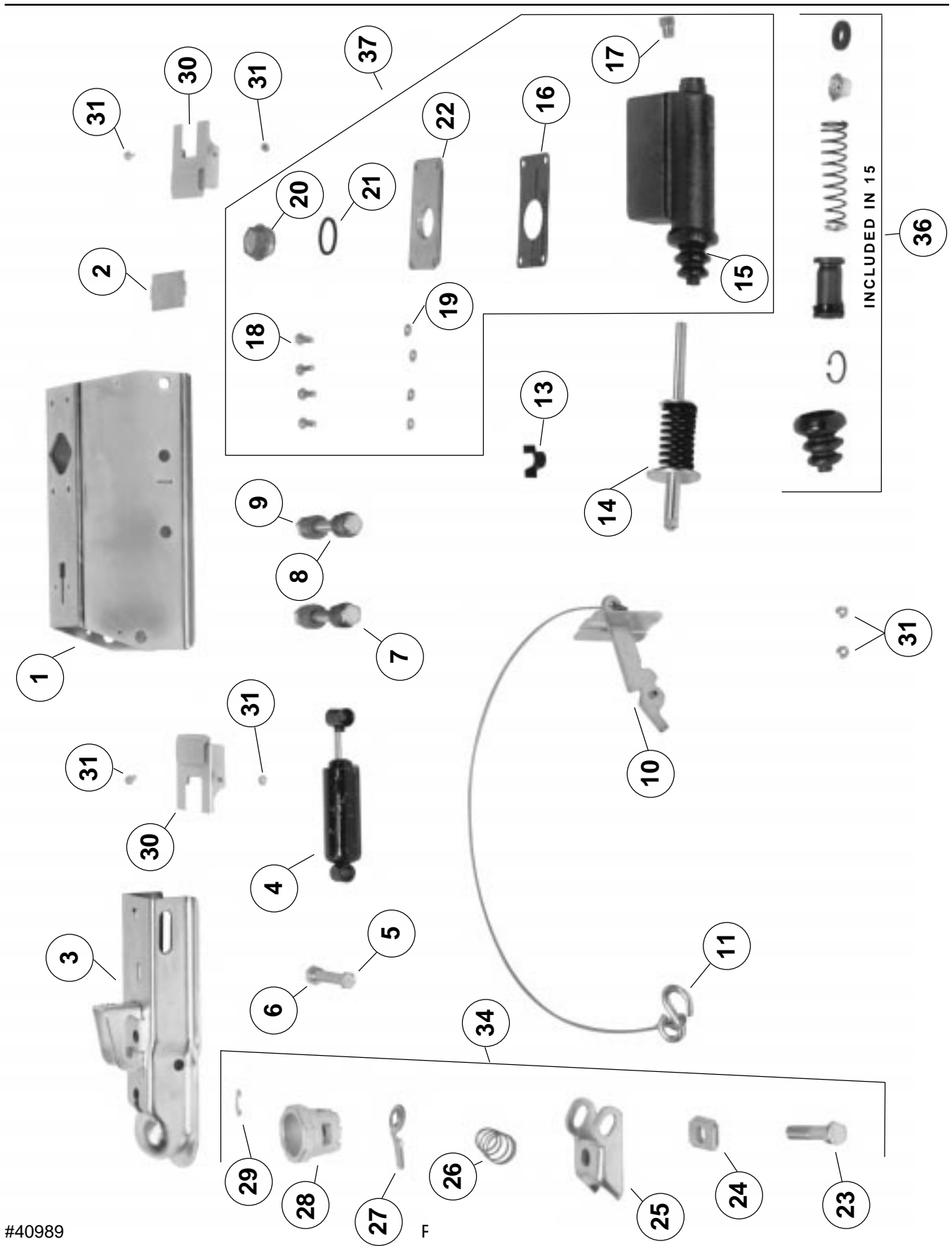
NOTE: Use only with 2" diameter tow ball.

G.V.W.R. limited to that of the ball & hitch being used.

LEVER-LOCK  
MODEL 60 ACTUATOR DIAGRAM



MTI  
**MULTI-FIT  
 MODEL 60 ACTUATOR DIAGRAM**



#40989

